

CSJA In-line Cold Shrinkable Joints for all 1/C Shielded Power Cables

FEATURES

- Total length of the splice body on the holdout is 14 to 19 inches providing a compact design.
- Integrated electrical stress control enhanced by factory molded stress cones and a Faraday cage.
- Void filling stress relief mastics are not necessary.
- Proven shield continuity concept which can also bridge concentric neutrals.
- The joint accepts both mechanical and compression connectors.
- When a shear bolt connector is used, this is a totally crimpless system.
- Meets IEEE-404 standard requirements.

APPLICATIONS

- "All-in-One" cold shrinkable joint for 5 kV through 35 kV. It is designed to splice tape shield, wire shield, LC shield, UniShield, JCN and flat strap shielded cables.

BENEFITS

- ♦ This cable joint has a pre-expanded EPDM re-jacketing sleeve and an integrated neutral sock. The "All-in-One" design is easy to install with minimal steps and short installation time.
- ♦ A pre-expanded, single-piece silicone rubber joint body with high mechanical expansion capability allows a wide application range.
- ♦ The silicone rubber body provides high dielectric strength, high tear strength, low tension set, and excellent low temperature recovery.
- ♦ An ergonomically designed spiral holdout provides a smooth installation with low release forces.



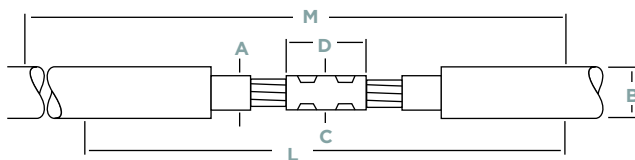
4

PRODUCT SELECTION INFORMATION: DIMENSIONS IN INCHES (MM)

Catalog Number	Length of Moisture Blocked Braid (mm)	Braid (AWG)
Cold Applied External Grounding Kit		
CSJ-EG-1	24 (610)	#8
CSJ-EG-2	24 (610)	#6
CSJ-EG-3	24 (610)	#4
CSJ-EG-4	24 (610)	#2

ADDITIONAL PRODUCT INFORMATION

- Selections are based on the typical dimensions of 100% insulated cables, manufactured in accordance with AEIC standard. Nominal insulation thickness (100%): 15 kV: 175 mils, 25 kV: 260 mils, 35 kV: 345 mils.
- Select the appropriate catalog number. Use the insulation OD and jacket OD range as the final ordering criteria.
- For mechanical shear bolt connector included in the kit confirm the correct connector selection according to the Min/Max diameter over the cable conductor from the tables.
- If external grounding is required, order the CSJ-EG kit.
- Standard package: 1 kit per box.
- Related test reports: EDR-5430, EDR-5455, EDR-5513, EDR-5570, EDR-5572, EDR-5588
- For AL Mechanical shear bolt connector information request data sheet 9-1773440-4 and for CU request 165972.


PRODUCT SELECTION INFORMATION: DIMENSIONS IN INCHES (MM)

Catalog Number	Voltage Class	Nominal Cable Range	Min - Max Insulation O.D. (A)	Jacket O.D. (max) (B)	Neutral Sock (AWG)	Min - Max Diameter Over Cable Conductor*		Kit Installed Length (L)	Required Install Space (M)
						O.D. (C)	Length (D)		
CSJA Joint Without Connector									
CSJA-821	5-8 kV	4/0-750	0.69-1.20 (17.5-30.5)	1.50 (38.1)	1/0	1.30 (33.0)	5.50 (140.0)	29 (737)	39 (990)
CSJA-1521	15 kV	#2-350	0.69-1.20 (17.5-30.5)	1.50 (38.1)	1/0	1.30 (33.0)	5.50 (140.0)	29 (737)	39 (990)
CSJA-1522	15 kV	4/0-750	0.87-1.40 (22.1-35.6)	1.80 (46.0)	1/0	1.50 (38.0)	5.50 (140.0)	29 (737)	39 (990)
CSJA-1523	15 kV	350-1000	1.03-1.58 (26.2-40.0)	2.05 (52.1)	2/0	1.65 (42.0)	6.69 (170.0)	33 (838)	43 (1090)
CSJA-1524	15 kV	750-1250	1.28-2.05 (32.50-52.0)	2.60 (66.0)	2/0	1.85 (47.0)	7.90 (200.0)	37 (939)	49 (1244)
CSJA-2822	28 kV	#1-500	0.87-1.40 (22.1-35.6)	1.80 (46.0)	1/0	1.50 (38.0)	5.50 (140.0)	29 (737)	39 (990)
CSJA-2823	28 kV	4/0-750	1.03-1.58 (26.20-40.0)	2.05 (52.1)	2/0	1.65 (42.0)	6.69 (170.0)	33 (838)	43 (1090)
CSJA-2824	28 kV	500-1250	1.28-2.05 (32.50-52.0)	2.60 (66.0)	2/0	1.85 (47.0)	7.90 (200.0)	37 (939)	49 (1244)
CSJA-3523	35 kV	1/0-350	1.03-1.49 (26.20-37.8)	2.05 (52.1)	2/0	1.40 (35.6)	5.50 (140.0)	33 (838)	43 (1090)
CSJA-3524	35 kV	350-1000	1.28-2.05 (34.54-52.0)	2.60 (66.0)	2/0	1.96 (50.0)	7.90 (200.0)	37 (939)	49 (1244)
CSJA-3525	35 kV	750-1250	1.63-2.36 (41.40-60.0)	2.60 (66.0)	2/0	2.36 (60.0)	7.90 (200.0)	37 (939)	49 (1244)
CSJA Joint With Copper Mechanical Shear Bolt Connector									
CSJA-1521M1	15 kV	2/0-350	0.69-1.20 (17.5-30.5)	1.50 (38.1)	1/0	0.376-0.736 (9.50-18.7)		29 (737)	39 (990)
CSJA-1522M1	15 kV	4/0-500	0.87-1.40 (22.1-35.6)	1.80 (46.0)	1/0	0.376-0.736 (9.50-18.7)		29 (737)	39 (990)
CSJA-1522M2	15 kV	350-750	0.87-1.40 (22.1-35.6)	1.80 (46.0)	1/0	0.570-0.945 (14.5-24.0)		29 (737)	39 (990)
CSJA-1523M2	15 kV	350-750	1.03-1.58 (26.2-40.0)	2.05 (52.1)	2/0	0.570-0.945 (14.5-24.0)		33 (838)	43 (1090)
CSJA-2822M1	28 kV	2/0-500	0.87-1.40 (22.1-35.6)	1.80 (46.0)	1/0	0.376-0.736 (9.50-18.7)		29 (737)	39 (990)
CSJA-2823M2	28 kV	350-750	1.03-1.58 (26.2-40.0)	2.05 (52.1)	2/0	0.570-0.945 (14.5-24.0)		33 (838)	43 (1090)
CSJA-2824M2	28 kV	500-750	1.28-2.05 (32.50-52.0)	2.60 (66.0)	2/0	0.570-0.945 (14.5-24.0)		37 (939)	49 (1244)
CSJA-3523M1	35 kV	2/0-350	1.03-1.49 (26.20-37.8)	2.05 (52.1)	2/0	0.376-0.736 (9.50-18.7)		33 (838)	43 (1090)
CSJA-3524M2	35 kV	350-750	1.28-2.05 (34.54-52.0)	2.60 (66.0)	2/0	0.570-0.945 (14.5-24.0)		37 (939)	49 (1244)
* Min./max. diameter over cable conductor accepted by the copper mechanical connector.									
CSJA Joint with Aluminum Mechanical Shear Bolt Connector									
CSJA-1521M4	15 kV	#2-3/0	0.69-1.20 (17.5-30.5)	1.50 (38.1)	1/0	0.268-0.470 (6.80-11.9)		29 (737)	39 (990)
CSJA-1521M5	15 kV	#2-350	0.69-1.20 (17.5-30.5)	1.50 (38.1)	1/0	0.268-0.681 (6.80-17.3)		29 (737)	39 (990)
CSJA-1522M6	15 kV	350-750	0.87-1.40 (22.1-35.6)	1.80 (46.0)	1/0	0.423-0.813 (10.7-20.6)		29 (737)	39 (990)
CSJA-1522M7	15 kV	350-750	0.87-1.40 (22.1-35.6)	1.80 (46.0)	1/0	0.736-0.998 (18.7-25.3)		29 (737)	39 (990)
CSJA-1523M8	15 kV	350-750	1.03-1.58 (26.20-40.0)	2.05 (52.1)	2/0	0.616-0.998 (15.7-25.3)		33 (838)	43 (1090)
CSJA-1524M9	15 kV	750-1000	1.28-2.05 (32.50-52.0)	2.60 (66.0)	2/0	0.813-1.152 (20.6-29.2)		37 (939)	49 (1244)
CSJA-2822M5	28 kV	#1-350	0.87-1.40 (22.1-35.6)	1.80 (46.0)	1/0	0.268-0.681 (6.80-17.3)		29 (737)	39 (990)
CSJA-2822M6	28 kV	4/0-500	0.87-1.40 (22.1-35.6)	1.80 (46.0)	1/0	0.423-0.813 (10.7-20.6)		29 (737)	39 (990)
CSJA-2823M8	28 kV	350-750	1.03-1.58 (26.20-40.0)	2.05 (52.1)	2/0	0.616-0.998 (15.7-25.3)		33 (838)	43 (1090)
CSJA-2824M8	28 kV	500-750	1.28-2.05 (32.50-52.0)	2.60 (66.0)	2/0	0.616-0.998 (15.7-25.3)		37 (939)	49 (1244)
CSJA-2824M9	28 kV	750-1000	1.28-2.05 (32.50-52.0)	2.60 (66.0)	2/0	0.813-1.152 (20.60-29.2)		37 (939)	49 (1244)
CSJA-3523M5	35 kV	1/0-350	1.03-1.49 (26.20-37.8)	2.05 (52.1)	2/0	0.268-0.681 (6.8-17.3)		33 (838)	43 (1090)
CSJA-3524M8	35 kV	350-750	1.28-2.05 (34.54-52.0)	2.60 (66.0)	2/0	0.616-0.998 (15.7-25.3)		37 (939)	49 (1244)
CSJA-3524M9	35 kV	750-1000	1.28-2.05 (34.54-52.0)	2.60 (66.0)	2/0	0.813-1.152 (20.60-29.2)		37 (939)	49 (1244)
CSJA-3525M10	35 kV	1000-1250	1.63-2.36 (41.40-60.0)	2.60 (66.0)	2/0	1.060-1.251 (23.0-31.7)		37 (939)	49 (1244)
* Min/max diameter over cable conductor accepted by the aluminum mechanical connector.									

CSJA JCN/EG In-line Cold Shrinkable Joints

FEATURES

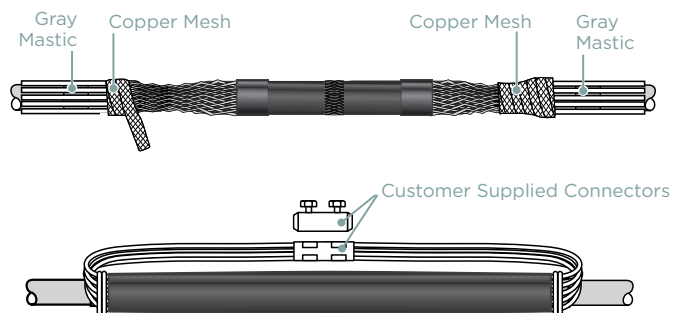
- Total length of the splice body on the holdout is 14 to 19 inches providing a compact design.
- Integrated electrical stress control enhanced by factory molded stress cones and Faraday cage.
- Void filling stress relief mastics are not necessary.
- Proven shield continuity concept. The neutral wires are connected externally. The integrated pre-expanded neutral sock is connected to the neutral wires by a constant force spring. This provides the metallic shielding system to the cable joint.
- The joint accepts both mechanical and compression connectors.
- Meets IEEE-404 standard requirements.

APPLICATIONS

- Cold shrinkable joint for 15 kV through 35 kV. It is designed to splice jacketed concentric neutral (JCN) cables.

BENEFITS

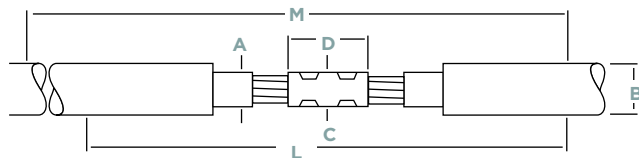
- ♦ This cable joint has a pre-expanded EPDM re-jacketing sleeve and an integrated neutral sock.
- ♦ The "All-in-One" design is easy to install with minimal steps and short installation time.
- ♦ A pre-expanded, single-piece silicone rubber joint body with high mechanical expansion capability allows a wide application range.
- ♦ The silicone rubber body provides high dielectric strength, high tear strength, low tension set, and excellent low temperature recovery.
- ♦ An ergonomically designed spiral holdout provides a smooth installation with low release forces.



Each silicone splice body is factory tested to include AC withstand and partial discharge in accordance with IEEE-404 production tests.

ADDITIONAL PRODUCT INFORMATION

- Selections are based on the typical dimensions of 100% insulated cables, manufactured in accordance with AEIC standard. Nominal insulation thickness (100%): 15 kV: 175mils, 25 kV: 260mils, 35 kV: 345mils.
- Select the appropriate catalog number. Use the insulation OD, jacket OD and the neutral sock equivalent range as the final ordering criteria. To ensure proper parking diameter, calculate jacket OD with concentric neutrals folded back over jacket.
- For mechanical shear bolt connector included in the kit confirm the correct connector selection according to the Min/Max diameter over the cable conductor from the tables.
- For other applications or if you have any questions, contact your TE representative.
- Standard package: 1 kit/box
- Related test report: EDR-5430, EDR-5455
- For AI Mechanical shear bolt connector information request data sheet 9-1773440-4 and for CU request 165972.


PRODUCT SELECTION INFORMATION: DIMENSIONS IN INCHES (MM)

Catalog Number	Voltage Class	Nominal Cable Range	Min - Max Insulation O.D. (A)	Jacket O.D. (max) (B)	Max Connector Dimensions		Kit Installed Length (L)	Required Install Space (M)
					O.D. (C)	Length (D)		
CSJA JCN/EG Joint Without Connector								
CSJA-JCN/EG-1511	15 kV	#2-350	0.69-1.20 (17.5-30.5)	1.50 (38.1)	1.30 (33.0)	5.50 (140.0)	29 (737)	37 (940)
CSJA-JCN/EG-1512	15 kV	4/0-750	0.87-1.40 (22.1-35.6)	1.80 (46.0)	1.50 (38.0)	5.50 (140.0)	29 (737)	37 (940)
CSJA-JCN/EG-1513	15 kV	350-1000	1.03-1.58 (26.2-40.0)	2.05 (52.1)	1.65 (42.0)	6.69 (170.0)	33 (838)	41 (1041)
CSJA-JCN/EG-1514	15 kV	750-1250	1.28-2.05 (32.50-52.0)	2.60 (66.0)	1.85 (47.0)	7.90 (200.0)	37 (939)	48 (1219)
CSJA-JCN/EG-2812	28 kV	#1-500	0.87-1.40 (22.1-35.6)	1.80 (46.0)	1.50 (38.0)	5.50 (140.0)	29 (737)	37 (940)
CSJA-JCN/EG-2813	28 kV	4/0-750	1.03-1.58 (26.20-40.0)	2.05 (52.1)	1.65 (42.0)	6.69 (170.0)	33 (838)	41 (1041)
CSJA-JCN/EG-2814	28 kV	500-1250	1.28-2.05 (32.50-52.0)	2.60 (66.0)	1.85 (47.0)	7.90 (200.0)	37 (939)	48 (1219)
CSJA-JCN/EG-3513	35 kV	1/0-350	1.03-1.49 (26.20-37.8)	2.05 (52.1)	1.40 (35.6)	5.50 (140.0)	33 (838)	41 (1041)
CSJA-JCN/EG-3514	35 kV	350-1000	1.28-2.05 (34.54-52.0)	2.60 (66.0)	1.96 (50.0)	7.90 (200.0)	37 (939)	48 (1219)
CSJA-JCN/EG-3515	35 kV	750-1250	0.63-2.36 (41.40-60.0)	2.60 (66.0)	2.36 (60.0)	7.90 (200.0)	37 (939)	48 (1219)

Catalog Number	Voltage Class	Nominal Cable Range	Min -Max Insulation O.D. (A)	Jacket O.D. (max) (B)	Min - Max Dia. Over Cable Conductor*	Kit Installed Length (L)	Required Install Space (M)
CSJA JCN/EG Joint With Copper mechanical Shear Bolt Connector*							
CSJA-JCN/EG-1511M1	15 kV	2/0-350	0.69-1.20 (17.5-30.5)	1.50 (38.1)	0.376-0.736 (9.50-18.7)	29 (737)	37 (940)
CSJA-JCN/EG-1512M1	15 kV	4/0-500	0.87-1.40 (22.1-35.6)	1.80 (46.0)	0.376-0.736 (9.50-18.7)	29 (737)	37 (940)
CSJA-JCN/EG-1512M2	15 kV	350-750	0.87-1.40 (22.1-35.6)	1.80 (46.0)	0.570-0.945 (14.5-24.0)	29 (737)	37 (940)
CSJA-JCN/EG-1513M2	15 kV	350-750	1.03-1.58 (26.2-40.0)	2.05 (52.1)	0.570-0.945 (14.5-24.0)	33 (838)	41 (1041)
CSJA-JCN/EG-2812M1	28 kV	2/0-500	0.87-1.40 (22.1-35.6)	1.80 (46.0)	0.376-0.736 (9.50-18.7)	29 (737)	37 (940)
CSJA-JCN/EG-2813M2	28 kV	350-750	1.03-1.58 (26.2-40.0)	2.05 (52.1)	0.570-0.945 (14.5-24.0)	33 (838)	41 (1041)
CSJA-JCN/EG-2814M2	28 kV	500-750	1.28-2.05 (32.50-52.0)	2.60 (66.0)	0.570-0.945 (14.5-24.0)	37 (939)	48 (1219)
CSJA-JCN/EG-3513M1	35 kV	2/0-350	1.03-1.49 (26.20-37.8)	2.05 (52.1)	0.376-0.736 (9.50-18.7)	33 (838)	41 (1041)
CSJA-JCN/EG-3514M2	35 kV	350-750	1.28-2.05 (34.54-52.0)	2.60 (66.0)	0.570-0.945 (14.5-24.0)	37 (939)	48 (1219)

* Min/max diameter over cable conductor accepted by the copper mechanical connector.

Catalog Number	Voltage Class	Nominal Cable Range	Min -Max Insulation O.D. (A)	Jacket O.D. (max) (B)	Min - Max Dia. Over Cable Conductor**	Kit Installed Length (L)	Required Install Space (M)
CSJA JCN/EG Joint With Aluminum Mechanical Shear Bolt Connector**							
CSJA-JCN/EG-1511M4	15 kV	#2-3/0	0.69-1.20 (17.5-30.5)	1.50 (38.1)	0.268-0.470 (6.80-11.9)	29 (737)	37 (940)
CSJA-JCN/EG-1511M5	15 kV	#2-350	0.69-1.20 (17.5-30.5)	1.50 (38.1)	0.268-0.681 (6.80-17.3)	29 (737)	37 (940)
CSJA-JCN/EG-1512M6	15 kV	4/0-500	0.87-1.40 (22.1-35.6)	1.80 (46.0)	0.423-0.813 (10.7-20.6)	29 (737)	37 (940)
CSJA-JCN/EG-1512M7	15 kV	500-750	0.87-1.40 (22.1-35.6)	1.80 (46.0)	0.736-0.998 (18.7-25.3)	29 (737)	37 (940)
CSJA-JCN/EG-1513M8	15 kV	350-750	1.03-1.58 (26.20-40.0)	2.05 (52.1)	0.616-0.998 (15.7-25.3)	33 (838)	41 (1041)
CSJA-JCN/EG-1514M9	15 kV	750-1000	1.28-2.05 (32.50-52.0)	2.60 (66.0)	0.813-1.152 (20.6-29.2)	37 (939)	48 (1219)
CSJA-JCN/EG-2812M5	28 kV	#1-350	0.87-1.40 (22.1-35.6)	1.80 (46.0)	0.268-0.681 (6.80-17.3)	29 (737)	39 (990)
CSJA-JCN/EG-2812M6	28 kV	4/0-500	0.87-1.40 (22.1-35.6)	1.80 (46.0)	0.423-0.813 (10.7-20.6)	29 (737)	39 (990)
CSJA-JCN/EG-2813M8	28 kV	350-750	1.03-1.58 (26.20-40.0)	2.05 (52.1)	0.616-0.998 (15.7-25.3)	33 (838)	41 (1041)
CSJA-JCN/EG-2814M8	28 kV	500-750	1.28-2.05 (32.50-52.0)	2.60 (66.0)	0.616-0.998 (15.7-25.3)	37 (939)	48 (1219)
CSJA-JCN/EG-2814M9	28 kV	750-1000	1.28-2.05 (32.50-52.0)	2.60 (66.0)	0.813-1.152 (20.60-29.2)	37 (939)	48 (1219)
CSJA-JCN/EG-3513M5	35 kV	1/0-350	1.03-1.49 (26.20-37.8)	2.05 (52.1)	0.268-0.681 (6.8-17.3)	33 (838)	41 (1041)
CSJA-JCN/EG-3514M8	35 kV	350-750	1.28-2.05 (34.54-52.0)	2.60 (66.0)	0.616-0.998 (15.7-25.3)	37 (939)	48 (1219)
CSJA-JCN/EG-3514M9	35 kV	750-1000	1.28-2.05 (34.54-52.0)	2.60 (66.0)	0.813-1.152 (20.60-29.2)	37 (939)	48 (1219)
CSJA-JCN/EG-3515M9	35 kV	750-1000	1.63-2.36 (41.40-60.0)	2.60 (66.0)	0.813-1.152 (20.60-29.2)	37 (939)	48 (1219)
CSJA-JCN/EG-3515M10	35 kV	1000-1250	1.63-2.36 (41.40-60.0)	2.60 (66.0)	1.060-1.251 (23.0-31.7)	37 (939)	48 (1219)

** Min/max diameter over cable conductor accepted by the aluminum mechanical connector.

CSJG In-line Cold Shrinkable Joints

FEATURES

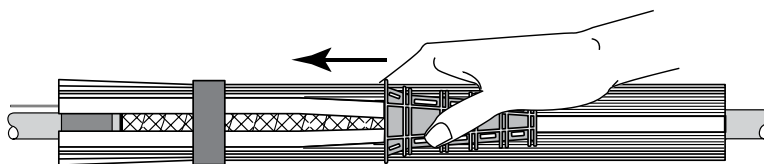
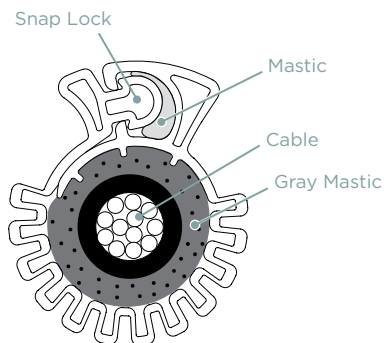
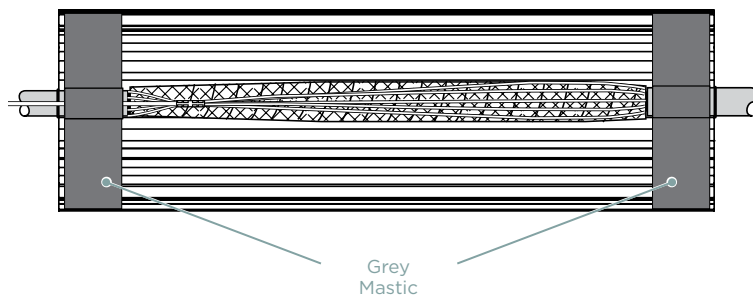
- The splice consists of a pre-expanded silicone body on a unique holdout design and separate re-jacketing system.
- A pre-expanded, single piece silicone rubber body with high mechanical expansion capability which allows a wide application range.
- An ergonomically designed spiral holdout provides a smooth installation with low release forces.
- Integrated electrical stress control enhanced by factory molded stress cones and a Faraday cage.
- Meets IEEE-404 standard requirements.

APPLICATIONS

- Cold shrinkable joint for 15 kV through 35 kV. It is designed to splice jacketed concentric neutral (JCN) cables.

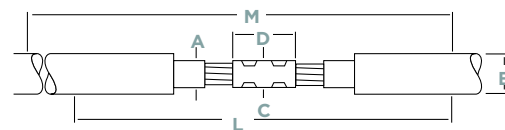
BENEFITS

- ♦ This design is easy to install with minimal steps and short installation time.
- ♦ The re-jacketing system is a cold applied wraparound sleeve designed to seal the entire splice and provide mechanical and environmental protection for direct buried installation.
- ♦ Both mechanical and compression connectors can be used.



ADDITIONAL PRODUCT INFORMATION

- Selections are based on the typical dimensions of 100% insulated cables, manufactured in accordance with AEIC standard. Nominal insulation thickness (100%): 15 kV: 175 mils, 25 kV: 260 mils, 35 kV: 345 mils.
- Select the appropriate catalog number. Use the insulation OD and jacket OD range as the final ordering criteria.
- For mechanical shear bolt connector included in the kit confirm the correct connector selection according to the Min/Max diameter over the cable conductor from the tables.
- Standard package: 1 kit/box.
- Related test reports: EDR-5430, EDR-5507, EDR-5455.


PRODUCT SELECTION INFORMATION: DIMENSIONS IN INCHES (MM)

Catalog Number	Voltage Class	Nominal Cable Range	Min - Max Insulation O.D. (A)	Max Connector Dimensions		Kit Installed Length (L)	Required Install Space (M)
				O.D. (C)	Length (D)		
CSJA JCN/EG Joint Without Connector							
CSJG-1511	15 kV	#2-350	0.69-1.20 (17.5-30.50)	1.30 (33.0)	5.50 (140.0)	33 (850)	42 (1060)
CSJG-1512	15 kV	4/0-750	0.87-1.40 (22.1-35.60)	1.50 (38.0)	5.50 (140.0)	33 (850)	42 (1060)
CSJG-1513	15 kV	350-1000	1.03-1.58 (26.2-40.0)	1.65 (42.0)	6.69 (170.0)	41 (1050)	50 (1270)
CSJG-1514	15 kV	750-1250	1.28-2.05 (32.50-52.0)	1.85 (47.0)	7.90 (200.0)	41 (1050)	55 (1390)
CSJG-2812	28 kV	#1-500	0.87-1.40 (22.1-35.60)	1.50 (38.0)	5.50 (140.0)	33 (850)	42 (1060)
CSJG-2813	28 kV	4/0-750	1.03-1.58 (26.20-40.0)	1.65 (42.0)	6.69 (170.0)	41 (1050)	50 (1270)
CSJG-2814	28 kV	500-1250	1.28-2.05 (32.50-52.0)	1.85 (47.0)	7.90 (200.0)	41 (1050)	55 (1390)
CSJG-3513	35 kV	1/0-350	1.03-1.49 (26.20-37.80)	1.40 (35.6)	5.50 (140.0)	41 (1050)	50 (1270)
CSJG-3514	35 kV	350-1000	1.28-2.05 (34.54-52.0)	1.96 (50.0)	7.90 (200.0)	41 (1050)	55 (1390)
CSJG-3515	35 kV	750-1250	1.63-2.36 (41.40-60.0)	2.36 (60.0)	7.90 (200.0)	41 (1050)	55 (1390)

Catalog Number	Voltage Class	Nominal Cable Range	Min - Max Insulation O.D. (A)	Min - Max Dia. Over Cable Conductor	Kit Install Length (L)	Required Install Space (M)
CSJG Joint with Copper Shear Bolt Connector*						
CSJG-1511M1	15 kV	2/0-350	0.69-1.20 (17.5-30.50)	0.376-0.736 (9.50-18.70)	33 (850)	42 (1060)
CSJG-1512M1	15 kV	4/0-500	0.87-1.40 (22.1-35.60)	0.376-0.736 (9.50-18.70)	33 (850)	42 (1060)
CSJG-1512M2	15 kV	350-750	0.87-1.40 (22.1-35.60)	0.570-0.945 (14.5-24.0)	33 (850)	42 (1060)
CSJG-1513M2	15 kV	350-750	1.03-1.58 (26.2-40.0)	0.570-0.945 (14.5-24.0)	41 (1050)	50 (1270)
CSJG-2812M1	28 kV	2/0-500	0.87-1.40 (22.1-35.60)	0.376-0.736 (9.50-18.70)	33 (850)	42 (1060)
CSJG-2813M2	28 kV	350-750	1.03-1.58 (26.2-40.0)	0.570-0.945 (14.5-24.0)	41 (1050)	50 (1270)
CSJG-2814M2	28 kV	500-750	1.28-2.05 (32.50-52.0)	0.570-0.945 (14.5-24.0)	41 (1050)	55 (1390)
CSJG-3513M1	35 kV	2/0-350	1.03-1.49 (26.20-37.80)	0.376-0.736 (9.50-18.70)	41 (1050)	50 (1270)
CSJG-3514M2	35 kV	350-750	1.28-2.05 (34.54-52.0)	0.570-0.945 (14.5-24.0)	41 (1050)	55 (1390)
* Min/max diameter over cable conductor accepted by the copper mechanical connector.						
CSJG Joint with Aluminum Shear Bolt Connector**						
CSJG-1511M4	15 kV	#2-3/0	0.69-1.20 (17.5-30.50)	0.268-0.470 (6.80-11.9)	33 (850)	42 (1060)
CSJG-1511M5	15 kV	#2-350	0.69-1.20 (17.5-30.50)	0.268-0.681 (6.80-17.3)	33 (850)	42 (1060)
CSJG-1512M6	15 kV	4/0-500	0.87-1.40 (22.1-35.60)	0.423-0.813 (10.7-20.6)	33 (850)	42 (1060)
CSJG-1512M7	15 kV	500-750	0.87-1.40 (22.1-35.60)	0.736-0.998 (18.7-25.3)	33 (850)	42 (1060)
CSJG-1513M8	15 kV	350-750	1.03-1.58 (26.20-40.0)	0.616-0.998 (15.7-25.3)	41 (1050)	50 (1270)
CSJG-1514M9	15 kV	750-1000	1.28-2.05 (32.50-52.0)	0.813-1.152 (20.6-29.2)	41 (1050)	55 (1390)
CSJG-2812M5	28 kV	#1-350	0.87-1.40 (22.1-35.60)	0.268-0.681 (6.80-17.3)	33 (850)	42 (1060)
CSJG-2812M6	28 kV	4/0-500	0.87-1.40 (22.1-35.60)	0.423-0.813 (10.7-20.6)	33 (850)	42 (1060)
CSJG-2813M8	28 kV	350-750	1.03-1.58 (26.20-40.0)	0.616-0.998 (15.7-25.3)	41 (1050)	50 (1270)
CSJG-2814M8	28 kV	500-750	1.28-2.05 (32.50-52.0)	0.616-0.998 (15.7-25.3)	41 (1050)	55 (1390)
CSJG-2814M9	28 kV	750-1000	1.28-2.05 (32.50-52.0)	0.813-1.152 (20.60-29.2)	41 (1050)	55 (1390)
CSJG-3513M5	35 kV	1/0-350	1.03-1.49 (26.20-37.80)	0.268-0.681 (6.8-17.3)	41 (1050)	50 (1270)
CSJG-3514M8	35 kV	350-750	1.28-2.05 (34.54-52.0)	0.616-0.998 (15.7-25.3)	41 (1050)	55 (1390)
CSJG-3514M9	35 kV	750-1000	1.28-2.05 (34.54-52.0)	0.813-1.152 (20.60-29.2)	41 (1050)	55 (1390)
CSJG-3515M10	35 kV	1000-1250	1.63-2.36 (41.40-60.0)	1.060-1.251 (23.0-31.7)	41 (1050)	55 (1390)
** Min/max diameter over cable conductor accepted by the aluminum mechanical connector.						

3/C CSJA Cold Shrinkable Joint

FEATURES

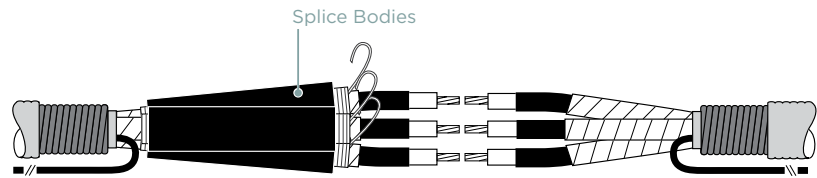
- The splice consists of three pre-expanded silicone bodies on a unique holdout and a separate re-jacketing system.
- An ergonomically designed spiral holdout provides a smooth installation with low release forces.
- Integrated electrical stress control enhanced by factory molded stress cones and a Faraday cage.
- Meets IEEE-404 standard requirements.

APPLICATIONS

- For 15 kV through 35 kV. Designed to splice 3/C Armored Cables.
- The GMRS re-jacketing system is a cold-applied wrap around sleeve that eliminates parking distance

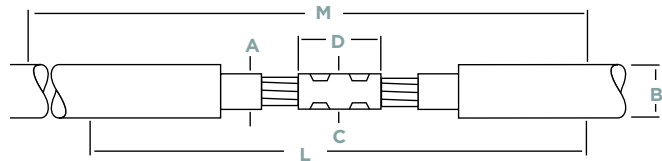
BENEFITS

- ♦ This design is easy to install with minimal steps and a short installation time.
- ♦ The re-jacketing system is a cold applied wraparound sleeve designed to seal the entire splice and provide mechanical and environmental protection for direct buried installations.
- ♦ Both mechanical and compression connectors can be used.
- ♦ Pre-expanded, single piece silicone rubber body with high mechanical expansion capability which allows a wide application range.



ADDITIONAL PRODUCT INFORMATION

- Selections are based on the typical dimensions of 100% insulated cables, manufactured in accordance with AEIC standard. Nominal insulation thickness (100%): 15 kV: 175 mils, 25 kV: 260 mils, 35 kV: 345 mils.
- Select the appropriate catalog number. Use the insulation OD and jacket OD range as the final ordering criteria.
- For mechanical shear bolt connector included in the kit confirm the correct connector selection according to the Min./Max. diameter over the cable conductor from the tables.
- Standard package: 1 kit/box.
- Related test reports: EDR-5530.


PRODUCT SELECTION INFORMATION: DIMENSIONS IN INCHES (MM)

Catalog Number	Voltage Class	Nominal Cable Range	Min - Max Insulation O.D. (A)	Max Connector Dimensions		Kit Installed Length (L)	Required Install Space (M)
				O.D. (C)	Length (D)		
CSJA 3/C Joint without Connector							
CSJA-3-1521-ARMR	15 kV	#2-350	0.69-1.20 (17.5-30.5)	1.30 (33.0)	5.50 (140.0)	65 (1650)	65 (1650)
CSJA-3-1522-ARMR	15 kV	4/0-750	0.87-1.40 (22.1-35.6)	1.50 (38.0)	5.50 (140.0)	65 (1650)	65 (1650)
CSJA-3-1523-ARMR	15 kV	350-1000	1.03-1.58 (26.2-40.0)	1.65 (42.0)	6.69 (170.0)	71 (1800)	71 (1800)
CSJA-3-2822-ARMR	28 kV	#1-500	0.87-1.40 (22.1-35.6)	1.50 (38.0)	5.50 (140.0)	65 (1650)	65 (1650)
CSJA-3-2823-ARMR	28 kV	4/0-750	1.03-1.58 (26.2-40.0)	1.65 (42.0)	6.69 (170.0)	71 (1800)	71 (1800)
CSJA-3-3523-ARMR	35 kV	1/0-350	1.03-1.49 (26.2-37.8)	1.40 (35.6)	5.50 (140.0)	71 (1800)	71 (1800)
CSJA-3-3524-ARMR	35 kV	350-1000	1.36-1.63 (34.54-41.4)	1.62 (42.0)	6.69 (170)	71 (1800)	71 (1800)

Catalog Number	Voltage Class	Nominal Cable Range	Min - Max Insulation O.D. (A)	Min - Max Dia. Over Cable Conductor	Kit Installed Length (L)	Required Install Space (M)
CSJA-3/C Joint with Copper Shear Bolt Connector*						
CSJA-3-1521M1-ARMR	15 kV	#2-350	0.69-1.20 (17.5-30.5)	0.376-0.736 (9.5-18.7)	65 (1650)	65 (1650)
CSJA-3-1522M1-ARMR	15 kV	4/0-500	0.87-1.40 (22.1-35.6)	0.376-0.736 (9.5-18.7)	65 (1650)	65 (1650)
CSJA-3-1522M2-ARMR	15 kV	350-750	0.87-1.40 (22.1-35.6)	0.570-0.945 (14.5-24.0)	71 (1800)	71 (1800)
CSJA-3-1523M3-ARMR	15 kV	500-1000	1.03-1.58 (26.2-40.0)	0.736-1.152 (18.7-29.3)	71 (1800)	71 (1800)
CSJA-3-2822M1-ARMR	28 kV	2/0-500	0.87-1.40 (22.1-35.6)	0.376-0.736 (9.5-18.7)	65 (1650)	65 (1650)
CSJA-3-2823M2-ARMR	28 kV	350-750	1.03-1.58 (26.2-40.0)	0.570-0.945 (14.5-24.0)	71 (1800)	71 (1800)
CSJA-3-3523M1-ARMR	35 kV	2/0-350	1.03-1.49 (26.2-37.8)	0.376-0.736 (9.5-18.7)	71 (1800)	71 (1800)
CSJA-3-3524M2-ARMR	35 kV	350-750	1.36-2.05 (34.54-54.0)	0.570-0.945 (14.5-24.0)	71 (1800)	71 (1800)

* Min/max diameter over cable conductor accepted by the copper mechanical connector.

Catalog Number	Voltage Class	Nominal Cable Range	Min - Max Insulation O.D. (A)	Min - Max Dia. Over Cable Conductor	Kit Installed Length (L)	Required Install Space (M)
CSJA-3/C Joint with Aluminum Shear Bolt Connector**						
CSJA-3-1521M4-ARMR	15 kV	#2-3/0	0.69-1.20 (17.5-30.5)	0.268-0.470 (6.8-11.9)	65 (1650)	65 (1650)
CSJA-3-1521M5-ARMR	15 kV	#2-350	0.69-1.20 (17.5-30.5)	0.268-0.681 (6.8-17.3)	65 (1650)	65 (1650)
CSJA-3-1522M6-ARMR	15 kV	4/0-500	0.87-1.40 (22.1-35.6)	0.423-0.813 (10.7-20.6)	71 (1800)	71 (1800)
CSJA-3-1522M7-ARMR	15 kV	500-750	0.87-1.40 (22.1-35.6)	0.736-0.998 (18.7-25.3)	71 (1800)	71 (1800)
CSJA-3-1523M8-ARMR	15 kV	350-750	1.03-1.58 (26.2-40.0)	0.616-0.998 (15.7-25.3)	71 (1800)	71 (1800)
CSJA-3-2822M5-ARMR	28 kV	#1-350	0.87-1.40 (22.1-35.6)	0.268-0.681 (6.8-17.3)	65 (1650)	65 (1650)
CSJA-3-2822M6-ARMR	28 kV	4/0-500	0.87-1.40 (22.1-35.6)	0.423-0.813 (10.7-20.6)	65 (1650)	65 (1650)
CSJA-3-2823M8-ARMR	28 kV	350-750	1.03-1.58 (26.2-40.0)	0.616-0.998 (15.7-25.3)	71 (1800)	71 (1800)
CSJA-3-3523M5-ARMR	35 kV	1/0-350	1.03-1.49 (26.2-37.8)	0.268-0.681 (6.8-17.3)	71 (1800)	71 (1800)
CSJA-3-3524M8-ARMR	35 kV	350-750	1.36-2.05 (34.54-54.0)	1.060-1.251 (23.0-31.7)	71 (1800)	71 (1800)

** Min/max diameter over cable conductor accepted by the aluminum mechanical connector.

CSJU Cold Shrink Joint for Underground Residential Distribution Cables

FEATURES

- Pre-expanded, single piece silicone rubber joint body with high mechanical expansion capability allows a wide application range.
- Pre-expanded EPDM re-jacketing sleeve provides superior moisture and environmental sealing.
- Option to include range-taking aluminum Shear Bolt or aluminum compression splice.
- TE's Raychem material proven by cold shrink products in service for decades.
- Total length of the splice body on the holdout is 12 inches proving a compact design.

APPLICATIONS

- Cold shrinkable joint for 15 kV through 25 kV. It is designed to splice jacketed concentric neutral (JCN) cables.
- The CSJU-S, a product extension to the CSJU, is intended for use on other neutral types.

BENEFITS

- ♦ All-in-One design is compact and requires less working space (trench) to install.
- ♦ An ergonomically designed spiral holdout provides a smooth installation with low release forces.
- ♦ Meets IEEE-404 requirements for 15 kV through 25 kV.
- ♦ Each silicone splice body is factory tested to include AC withstand and partial discharge in accordance with IEEE-404 production tests.
- ♦ Cold weather and impact testing executed to ensure top performance in challenging conditions.



PRODUCT SELECTION INFORMATION: DIMENSIONS IN INCHES (MM)

Catalog Number	Voltage Class	Nominal Cable Range	Min - Max Insulation O.D.	Max Jacket Dimensions O.D.	Min - Max Diameter Over Cable Conductor
CSJU Joint without Connector					
CSJU-1511	15 kV	#2-4/0	0.64-0.99 (16.3 - 25.1)	1.26 (32.0)	1.00 (25.4) 3.25 (82.5)
CSJU-2511	25 kV	#1-2/0	0.84-1.03 (21.3 - 26.2)	1.26 (32.0)	1.00 (25.4) 3.25 (82.5)

Catalog Number	Voltage Class	Nominal Cable Range	Min - Max Insulation O.D.	Max Jacket Dimensions O.D.
CSJU Joint with Aluminum Mechanical Shear Bolt Connector				
CSJU-1511-SB1	15 kV	#2-1/0	0.64-0.99 (16.3 - 25.1)	1.26 (32.0)
CSJU-1511-SB2	15 kV	#2-4/0	0.64-0.99 (16.3 - 25.1)	1.26 (32.0)
CSJU-2511-SB1	25 kV	#1-1/0	0.84-1.03 (21.3 - 26.2)	1.26 (32.0)
CSJU-2511-SB2	25 kV	#1-2/0	0.84-1.03 (21.3 - 26.2)	1.26 (32.0)
CSJU Joint with Aluminum Compression Connector				
CSJU-1511-ALC0	15 kV	#2 STR-SOL, #1 SOL	0.64 - 0.99 (16.3 - 25.1)	1.26 (32.0)
CSJU-1511-ALC1	15 kV	#1 STR-CPT, 1/0 CPT-SOL	0.64 - 0.99 (16.3 - 25.1)	1.26 (32.0)
CSJU-1511-ALC2	15 kV	1/0 STR-CMPR, 2/0 CPT	0.64 - 0.99 (16.3 - 25.1)	1.26 (32.0)
CSJU-1511-ALC3	15 kV	2/0-STR-CMPR, 3/0 CPT	0.64 - 0.99 (16.3 - 25.1)	1.26 (32.0)
CSJU-1511-ALC4	15 kV	3/0 STR-CMPR, 4/0 CPT	0.64 - 0.99 (16.3 - 25.1)	1.26 (32.0)
CSJU-1511-ALC5	15 kV	4/0 STR-CMPR	0.64 - 0.99 (16.3 - 25.1)	1.26 (32.0)
CSJU-2511-ALC0	25 kV	#2 STR-SOL, #1 SOL	0.84 - 1.03 (21.3 - 26.2)	1.26 (32.0)
CSJU-2511-ALC1	25 kV	#1 STR-CPT, 1/0 CPT-SOL	0.84 - 1.03 (21.3 - 26.2)	1.26 (32.0)
CSJU-2511-ALC2	25 kV	1/0 STR-CMPR, 2/0 CPT	0.84 - 1.03 (21.3 - 26.2)	1.26 (32.0)
CSJU-2511-ALC3	25 kV	2/0-STR-CMPR, 3/0 CPT	0.84 - 1.03 (21.3 - 26.2)	1.26 (32.0)

ADDITIONAL PRODUCT INFORMATION

- Selections are based on the typical dimensions of 100% insulated cables, manufactured in accordance with AEIC standard. Nominal insulation thickness (100%): 15 kV: 175mils, 25 kV: 260mils.
- Select the appropriate catalog number using the insulation O.D. and jacket O.D. range as the final ordering criteria.
- For other applications or if you have questions, contact your TE representative.
- Standard package: 1 kit per box.
- Related test reports: EDR 5643, EDR 5644