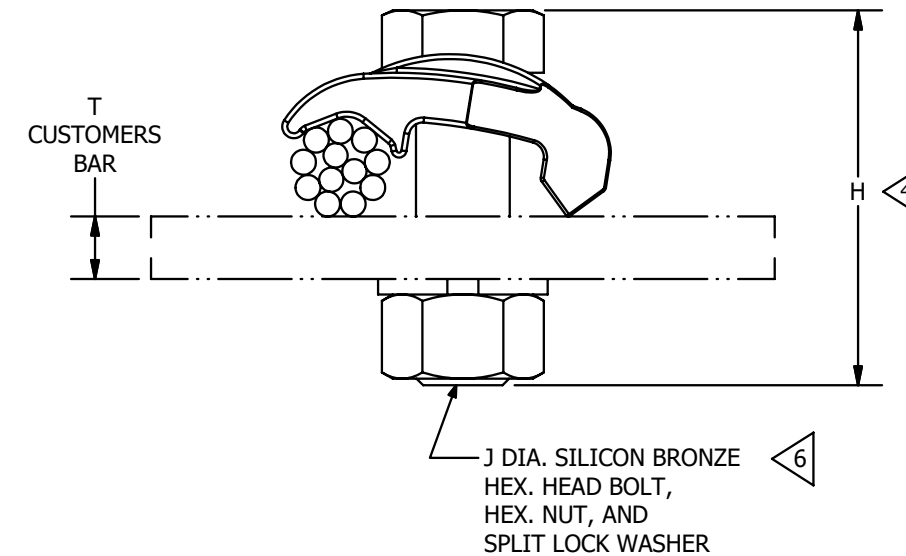
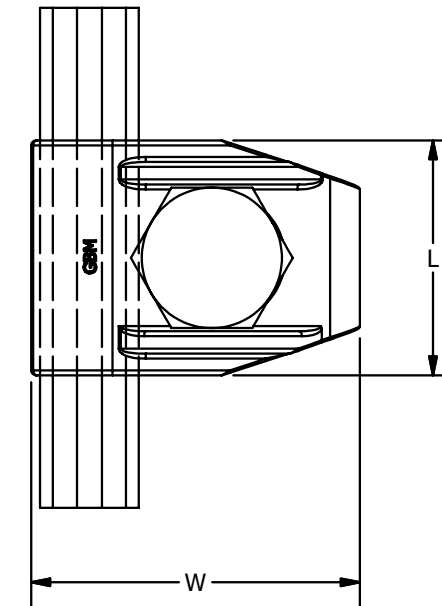


COPPER CONDUCTORS ACCOMMODATED		CAT. NO. 5 6	H 4	J DIA.	L	W	T 4	TORQUE Lb-in [N-m]
AWG	METRIC WIRE SIZE							
# 8 SOL (.129 DIA) - # 4 STR (.232 DIA)	10 mm ² SOL [3.58 DIA] - 16 mm ² STR [5.13 DIA]	GBM4C	1.36 [35]	3/8 - 16	.88 [22]	1.02 [26]	1/4"	240 [27]
# 4 SOL (.232 DIA) - 2/0 STR (.418 DIA)	25mm ² STR [6.48 DIA] - 70mm ² STR [10.9 DIA]	GBM26	1.49 [38]	3/8 - 16	.94 [24]	1.34 [34]		240 [27]
2/0 SOL (.365 DIA) - 250 KCMIL (.575 DIA)	70mm ² STR [10.9 DIA] - 120mm ² STR [14.4 DIA]	GBM29	2.07 [53]	1/2 - 13	1.25 [32]	1.84 [47]		480 [54]
300 KCMIL (.630 DIA) - 500 KCMIL (.814 DIA)	150mm ² STR [16.0 DIA] - 240mm ² STR [20.3 DIA]	GBM34	2.32 [59]	1/2 - 13	1.38 [35]	2.22 [56]		480 [54]
550 KCMIL (.855 DIA) - 750 KCMIL (.998 DIA)	300mm ² STR [22.6 DIA] - 400mm ² STR [26.1 DIA]	GBM39	3.31	5/8 - 11	1.75	2.69 [68]		660 [75]
800 KCMIL (1.031 DIA) - 1000 KCMIL (1.152 DIA)	400mm ² STR [26.2 DIA] - 625mm ² STR [32.7 DIA]	GBM44	3.31	5/8 - 11	1.75	3.06 [78]		660 [75]

REV	DATE	DESCRIPTION	ECO	BY	C'H'K.
F	26-06-2020	NOTES UPDATE	53787	TM	EM



NOTES:

1. MATERIAL: CAST COPPER ALLOY.
2. UL 467 LISTED, FILE NO. E9999. ACCEPTABLE FOR DIRECT BURIAL IN GROUND OR CONCRETE, CSA 22.2 NO. 65 LISTED, FILE NO. 42862.
3. DIMENSIONS IN BRACKETS [] ARE IN MILLIMETERS ROUNDED OFF TO THE NEAREST MILLIMETER, UNLESS OTHERWISE NOTED, AND ARE FOR REFERENCE ONLY.
4. FOR BAR THICKNESS FROM 1/4" TO 1/2" ADD THE SUFFIX "-T4" TO THE CATALOG NUMBER. FOR BAR THICKNESS FROM 1/2" TO 1" ADD THE SUFFIX "-T8" TO THE CATALOG NUMBER. "H" DIMENSION ONLY APPLIES TO THE STANDARD (NON-SUFFIX) CATALOG NUMBERS SHOWN IN TABLE ABOVE.
5. CATALOG NUMBERS WITH A "W" SUFFIX HAVE A TIN COATED BODY AND HARDWARE.
6. CATALOG NUMBERS WITH A "GS" SUFFIX HAVE GALVANIZED HARDWARE.
7. ALL SIZES ARE LISTED TO UL 467 AND CSA C22.2 NO.41 GROUNDING & BONDING EQUIPMENT STANDARDS.

TO ORDER BURNDY® PRODUCTS CALL		GROUND CONNECTOR	
UNITED STATES 1-800-346-4175 (LONDONDERRY, NH)		ITEM NO: N/A	
CANADA: 1-800-361-6975 (QUEBEC) 1-800-387-6487 (ALL OTHER PROVINCES)		CAT. NO: GBM -- (TABLE)	
FOR PRODUCT INFO: http://www.burndy.com		DRAWN BY: H.C 17-09-1985	
		CHECKER: E.MARTIN 26-06-2020	
		DSN APRVL: E.MARTIN 26-06-2020	
		MFG APRVL: --	
		QA APRVL: J.BRODEUR 29-06-2020	
		MKT APRVL: S.PARSONS 26-06-2020	
		PROD FAM: MECHANICAL GROUNDING	
		DRAWING NO	
		REV	
		PROJECT #: --	
		SIZE	
		DOCUMENT TYPE: SALES	
		REL LEVEL: Released	
		B	
		SC091658-01	
		F	
		SHEET 1 OF 1	