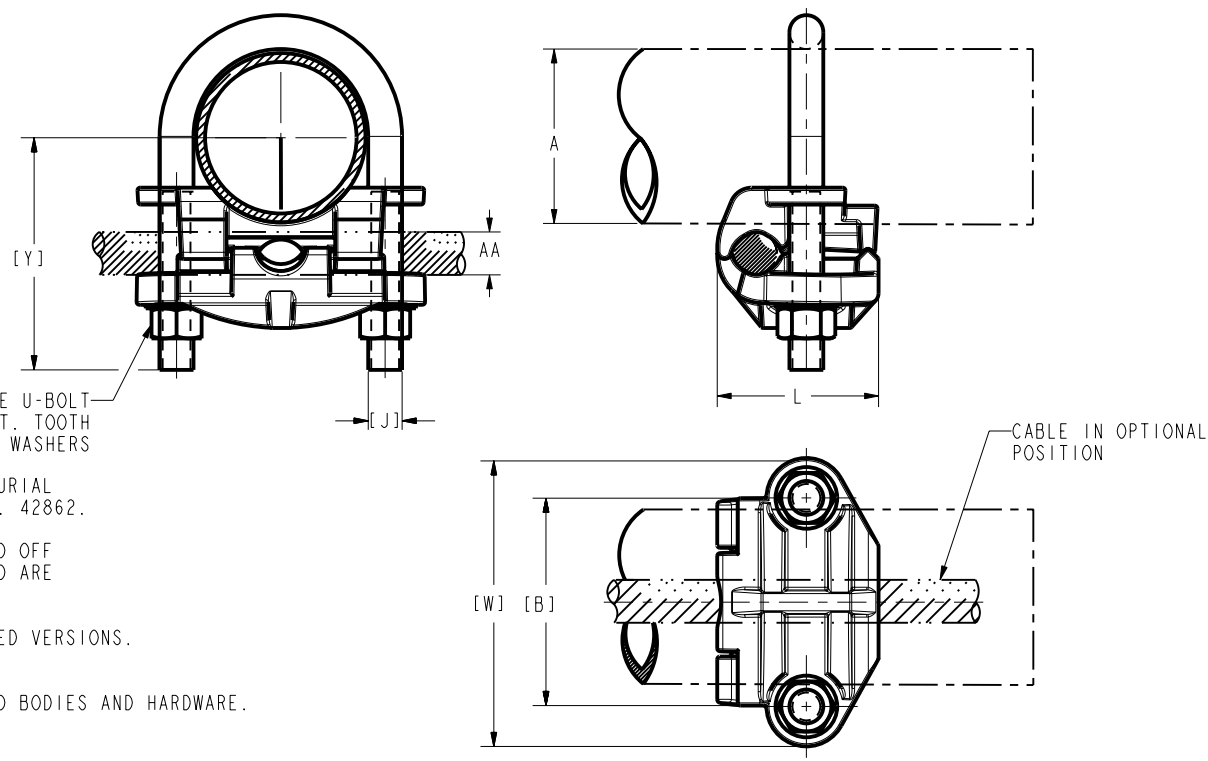


REV	DATE	DESCRIPTION	ECO	BY	C/H/K
M	2019-07-30 01:00:00 EDT	1" DIMENSION ADDED AND HARDWARE DETAIL UPDATED IN SHEET 1, 2 & 4 DIMENSION "A" AND "L" UPDATED IN SHEET 2.	51887	PB	RG

CATALOG NUMBER	A						AA						B		Y		J		L		W		"U" BOLT	TORQUE			
	ROD ACCOMMODATED			I.P.S. PIPE ACCOMMODATED			COPPER CONDUCTOR ACCOMMODATED						(in)	(mm)	(in)	(mm)	(in)	(mm)	(in)	(mm)	(in)	(mm)		Lb	in	Nm	
	NOMINAL DIAMETER (in)	ACTUAL DIAMETER		NOMINAL DIAMETER (in)	ACTUAL DIAMETER		AWG			METRIC WIRE SIZE																	
		(in)	(mm)		(in)	(mm)	MIN	MAX	DIA	SIZE	DIA	MIN	MAX	DIA													
GAR114C	0.5	0.5000	[13]	1/4	0.540	[14]	8 sol	0.128	4 str	0.232	10mm ² sol	[3.6]	16mm ² str	[5.1]	1.00	[25]	1.88	[48]	3/8	[10]	1.31	[33]	1.88	[48]	271	240	27.0
GAR1126	0.5	0.5000	[13]	1/4	0.540	[14]	4 sol	0.204	2/0 str	0.419	25mm ² str	[6.5]	70mm ² str	[10.9]	1.00	[25]	1.88	[48]	3/8	[10]	1.56	[40]	1.88	[48]	271	240	27.0
GAR1129	0.5	0.5000	[13]	1/4	0.540	[14]	2/0 sol	0.365	250 Kcmil	0.575	70mm ² str	[10.9]	120mm ² str	[14.4]	1.00	[25]	1.88	[48]	3/8	[10]	1.81	[46]	1.88	[48]	271	240	27.0
GAR644C	0.625-0.75	0.625-0.75	[16]-[19]	3/8	0.675	[17]	8 sol	0.128	4 str	0.232	10mm ² sol	[3.6]	16mm ² str	[5.1]	1.19	[30]	2.06	[52]	3/8	[10]	1.31	[33]	2.06	[52]	269	240	27.0
GAR6426	0.625-0.75	0.625-0.75	[16]-[19]	3/8	0.675	[17]	4 sol	0.204	2/0 str	0.419	25mm ² str	[6.5]	70mm ² str	[10.9]	1.19	[30]	2.06	[52]	3/8	[10]	1.56	[40]	2.06	[52]	269	240	27.0
GAR6429	0.625-0.75	0.625-0.75	[16]-[19]	3/8	0.675	[17]	2/0 sol	0.365	250 Kcmil	0.575	70mm ² str	[10.9]	120mm ² str	[14.4]	1.19	[30]	2.06	[52]	3/8	[10]	1.81	[46]	2.06	[52]	269	240	27.0
GAR6434	0.625-0.75	0.625-0.75	[16]-[19]	3/8	0.675	[17]	300 Kcmil	0.63	500 Kcmil	0.813	150mm ² str	[16.0]	240mm ² str	[20.3]	1.31	[33]	2.56	[65]	1/2	[13]	2.25	[57]	2.44	[62]	254	480	54.1
GAR144C	1.000	1.000	[25]	1/2-3/4	.840-1.050	[21]-[27]	8 sol	0.128	4 str	0.232	10mm ² sol	[3.6]	16mm ² str	[5.1]	1.50	[38]	1.81	[46]	3/8	[10]	1.31	[33]	2.35	[60]	222	240	27.0
GAR1426	1.000	1.000	[25]	1/2-3/4	.840-1.050	[21]-[27]	4 sol	0.204	2/0 str	0.419	25mm ² str	[6.5]	70mm ² str	[10.9]	1.50	[38]	1.81	[46]	3/8	[10]	1.56	[40]	2.38	[60]	249	240	27.0
GAR1429	1.000	1.000	[25]	1/2-3/4	.840-1.050	[21]-[27]	2/0 sol	0.365	250 Kcmil	0.575	70mm ² str	[10.9]	120mm ² str	[14.4]	1.50	[38]	2.12	[54]	3/8	[10]	1.81	[46]	2.38	[60]	249	240	27.0
GAR1434	1.000	1.000	[25]	1/2-3/4	.840-1.050	[21]-[27]	300 Kcmil	0.63	500 Kcmil	0.813	150mm ² str	[16.0]	240mm ² str	[20.3]	1.62	[41]	2.69	[68]	1/2	[13]	2.38	[60]	2.75	[70]	247	480	54.1
GAR154C	1.120-1.31	1.120-1.31	[28]-[33]	1	1.315	[33]	8 sol	0.128	4 str	0.232	10mm ² sol	[3.6]	16mm ² str	[5.1]	1.75	[45]	2.31	[59]	3/8	[10]	1.31	[33]	2.62	[67]	244	240	27.0
GAR1526	1.120-1.31	1.120-1.31	[28]-[33]	1	1.315	[33]	4 sol	0.204	2/0 str	0.419	25mm ² str	[6.5]	70mm ² str	[10.9]	1.75	[45]	2.31	[59]	3/8	[10]	1.56	[40]	2.62	[67]	244	240	27.0
GAR1529	1.120-1.31	1.120-1.31	[28]-[33]	1	1.315	[33]	2/0 sol	0.365	250 Kcmil	0.575	70mm ² str	[10.9]	120mm ² str	[14.4]	1.75	[45]	2.31	[59]	3/8	[10]	1.81	[46]	2.62	[67]	244	240	27.0
GAR1534	1.120-1.31	1.120-1.31	[28]-[33]	1	1.315	[33]	300 Kcmil	0.63	500 Kcmil	0.813	150mm ² str	[16.0]	240mm ² str	[20.3]	1.88	[48]	3.31	[84]	1/2	[13]	2.38	[60]	3.00	[76]	311	480	54.1
GAR164C	1.380-1.66	1.380-1.66	[35]-[42]	1 1/4	1.660	[42]	8 sol	0.128	4 str	0.232	10mm ² sol	[3.6]	16mm ² str	[5.1]	2.06	[52]	2.31	[59]	3/8	[10]	1.31	[33]	3.00	[76]	204	240	27.0
GAR1626	1.380-1.66	1.380-1.66	[35]-[42]	1 1/4	1.660	[42]	4 sol	0.204	2/0 str	0.419	25mm ² str	[6.5]	70mm ² str	[10.9]	2.06	[52]	2.31	[59]	3/8	[10]	1.56	[40]	3.00	[76]	204	240	27.0
GAR1629	1.380-1.66	1.380-1.66	[35]-[42]	1 1/4	1.660	[42]	2/0 sol	0.365	250 Kcmil	0.575	70mm ² str	[10.9]	120mm ² str	[14.4]	2.06	[52]	2.31	[59]	3/8	[10]	1.51	[38]	3.00	[76]	204	240	27.0
GAR1634	1.380-1.66	1.380-1.66	[35]-[42]	1 1/4	1.660	[42]	300 Kcmil	0.63	500 Kcmil	0.813	150mm ² str	[16.0]	240mm ² str	[20.3]	2.22	[56]	3.19	[81]	1/2	[13]	2.38	[60]	3.38	[86]	423	480	54.1
GAR1639	1.380-1.66	1.380-1.66	[35]-[42]	1 1/4	1.660	[42]	550 Kcmil	0.85	750 Kcmil	0.998	300mm ² str	[22.6]	300mm ² str	[22.6]	2.31	[59]	3.56	[90]	1/2	[13]	2.75	[70]	3.75	[95]	359	480	54.1
GAR174C	1.620-1.90	1.620-1.90	[41]-[48]	1 1/2	1.900	[48]	8 sol	0.128	4 str	0.232	10mm ² sol	[3.6]	16mm ² str	[5.1]	2.34	[59]	2.69	[68]	3/8	[10]	1.31	[33]	3.25	[83]	268	240	27.0
GAR1726	1.620-1.90	1.620-1.90	[41]-[48]	1 1/2	1.900	[48]	4 sol	0.204	2/0 str	0.419	25mm ² str	[6.5]	70mm ² str	[10.9]	2.34	[59]	2.69	[68]	3/8	[10]	1.56	[40]	3.25	[83]	268	240	27.0
GAR1729	1.620-1.90	1.620-1.90	[41]-[48]	1 1/2	1.900	[48]	2/0 sol	0.365	250 Kcmil	0.575	70mm ² str	[10.9]	120mm ² str	[14.4]	2.34	[59]	2.69	[68]	3/8	[10]	1.81	[46]	3.25	[83]	268	240	27.0
GAR1734	1.620-1.90	1.620-1.90	[41]-[48]	1 1/2	1.900	[48]	300 Kcmil	0.63	500 Kcmil	0.813	150mm ² str	[16.0]	240mm ² str	[20.3]	2.47	[63]	3.19	[81]	1/2	[13]	2.38	[60]	3.62	[97]	302	480	54.1
GAR184C	2.000-2.38	2.000-2.38	[51]-[60]	2	2.375	[60]	8 sol	0.128	4 str	0.232	10mm ² sol	[3.6]	16mm ² str	[5.1]	2.81	[71]	2.62	[67]	3/8	[10]	1.31	[33]	3.69	[94]	257	240	27.0
GAR1826	2.000-2.38	2.000-2.38	[51]-[60]	2	2.375	[60]	4 sol	0.204	2/0 str	0.419	25mm ² str	[6.5]	70mm ² str	[10.9]	2.81	[71]	2.62	[67]	3/8	[10]	1.56	[40]	3.69	[94]	257	240	27.0
GAR1829	2.000-2.38	2.000-2.38	[51]-[60]	2	2.375	[60]	2/0 sol	0.365	250 Kcmil	0.575	70mm ² str	[10.9]	120mm ² str	[14.4]	2.81	[71]	2.62	[67]	3/8	[10]	1.81	[46]	3.69	[94]	310	240	27.0
GAR1834	2.000-2.38	2.000-2.38	[51]-[60]	2	2.375	[60]	300 Kcmil	0.63	500 Kcmil	0.813	150mm ² str	[16.0]	240mm ² str	[20.3]	2.94	[75]	3.62	[92]	1/2	[13]	2.38	[60]	4.06	[103]	260	480	54.1
GAR1839	2.000-2.38	2.000-2.38	[51]-[60]	2	2.375	[60]	550 Kcmil	0.85	750 Kcmil	0.998	300mm ² str	[22.6]	300mm ² str	[22.6]	3.06	[78]	3.80	[97]	5/8	[16]	2.75	[70]	4.44	[113]	358	355	74.4
GAR194C	2.500-2.88	2.500-2.88	[64]-[73]	2 1/2	2.875	[73]	8 sol	0.128	4 str	0.232	10mm ² sol	[3.6]	16mm ² str	[5.1]	3.31	[84]	3.19	[81]	3/8	[10]	1.31	[33]	4.19	[106]	266	240	27.0



NOTES:

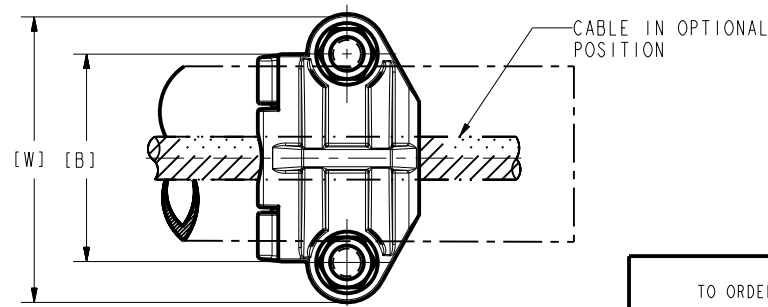
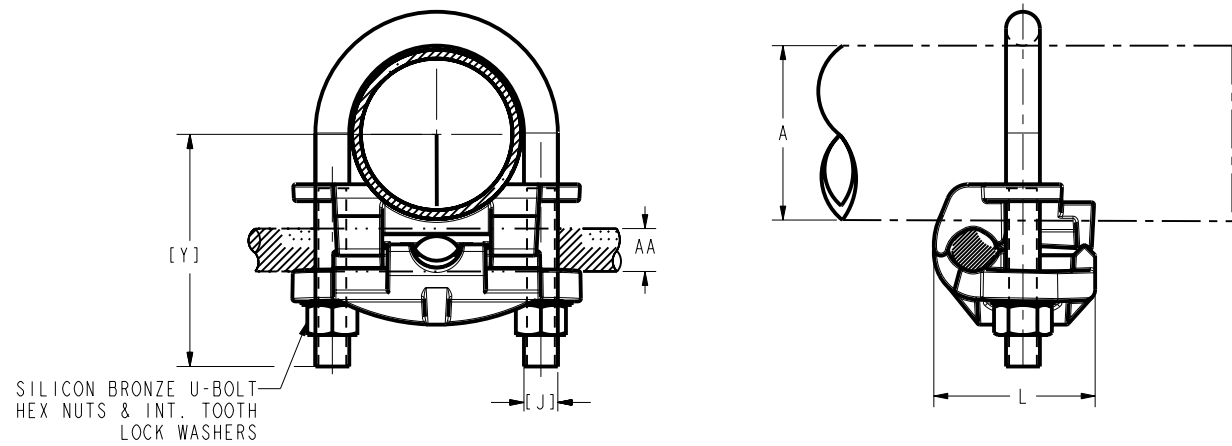
- MATERIAL: CAST COPPER ALLOY.
- FINISH: BRIGHT DIPPED.
- UL 467 LISTED FILE NO. E9999, ACCEPTABLE FOR DIRECT BURIAL IN EARTH AND CONCRETE. CSA 22.2 NO 65 LISTED. FILE NO. 42862.
- DIMENSIONS IN BRACKETS [] ARE IN MILLIMETERS, ROUNDED OFF TO THE NEAREST MILLIMETER, UNLESS OTHERWISE NOTED, AND ARE FOR REFERENCE ONLY.
- ADD SUFFIX "TN" TO THESE CATALOG NUMBERS FOR TIN-PLATED VERSIONS. (HARDWARE NOT TIN PLATED).
- ADD SUFFIX "W" TO THESE CATALOG NUMBERS FOR TIN PLATED BODIES AND HARDWARE. HARDWARE TO BE ELECTRO-TIN PLATED.
- FOR CABLE-TO-REBAR SEE SHEET 4.

SILICON BRONZE U-BOLT
HEX NUTS & INT. TOOTH
LOCK WASHERS

CABLE IN OPTIONAL
POSITION

TO ORDER BURNDY® PRODUCTS CALL		GROUND CLAMP - CABLE TO REBAR	
UNITED STATES 1-800-346-4175 (LONDONDERRY, NH)		ITEM NO: N/A	CAT. NO: GAR-- (TABLE)
CANADA: 1-800-361-6975 (QUEBEC) 1-800-387-6487 (ALL OTHER PROVINCES)		DRAWN BY: B.K. 01/21/09	CHECKER: G.H.G. 01/21/09
FOR PRODUCT INFO: http://www.burndy.com		DSN APPVL: T REYNOLDS 10/18/12	MFG APPVL: --
		QA APPVL: J HILLMAN 10/22/12	MKT APPVL: P THERRIEN 10/19/12
		PROD FAM: MECHANICAL GROUNDING	DRAWING NO: SD015789
		PROJECT #: --	SCALE: 1:1
		DOCUMENT TYPE: Sales	REV: M
		REL LEVEL: Released	SHEET 1 OF 4

CATALOG NUMBER	A						AA						B		Y		J		L		W		"U" BOLT	TORQUE			
	ROD ACCOMMODATED			I.P.S. PIPE ACCOMMODATED			COPPER CONDUCTOR ACCOMMODATED						(in)	(mm)	(in)	(mm)	(in)	(mm)	(in)	(mm)	(in)	(mm)		Lb	in	Nm	
	NOMINAL DIAMETER (in)	ACTUAL DIAMETER		NOMINAL DIAMETER (in)	ACTUAL DIAMETER		AWG			METRIC WIRE SIZE																	
		(in)	(mm)		(in)	(mm)	SIZE	DIA	SIZE	DIA	SIZE	DIA															SIZE
GAR1926	2.500-2.88	2.500-2.88	[64]-[73]	2 1/2	2.875	[73]	4 sol	0.204	2/0 str	0.419	25mm ² str	[6.5]	70mm ² str	[10.9]	3.31	[84]	3.19	[81]	3/8	[10]	1.56	[40]	4.19	[106]	266	240	27.0
GAR1929	2.500-2.88	2.500-2.88	[64]-[73]	2 1/2	2.875	[73]	2/0 sol	0.365	250 Kcmil	0.575	70mm ² str	[10.9]	120mm ² str	[14.4]	3.31	[84]	3.19	[81]	3/8	[10]	1.81	[46]	4.19	[106]	266	240	27.0
GAR1934	2.500-2.88	2.500-2.88	[64]-[73]	2 1/2	2.875	[73]	300 Kcmil	0.63	500 Kcmil	0.813	150mm ² str	[16.0]	240mm ² str	[20.3]	3.44	[87]	3.88	[98]	1/2	[13]	2.38	[60]	4.36	[111]	347	480	54.1
GAR204C	3.000-3.50	3.000-3.50	[76]-[89]	3	3.500	[89]	8 sol	0.128	4 str	0.232	10mm ² sol	[3.6]	16mm ² str	[5.1]	3.94	[100]	3.44	[87]	3/8	[10]	1.31	[33]	4.81	[122]	267	240	27.0
GAR2026	3.000-3.50	3.000-3.50	[76]-[89]	3	3.500	[89]	4 sol	0.204	2/0 str	0.419	25mm ² str	[6.5]	70mm ² str	[10.9]	3.94	[100]	3.44	[87]	3/8	[10]	1.56	[40]	4.81	[122]	267	240	27.0
GAR2029	3.000-3.50	3.000-3.50	[76]-[89]	3	3.500	[89]	2/0 sol	0.365	250 Kcmil	0.575	70mm ² str	[10.9]	120mm ² str	[14.4]	3.94	[100]	3.44	[87]	3/8	[10]	1.81	[46]	4.81	[122]	267	240	27.0
GAR2034	3.000-3.50	3.000-3.50	[76]-[89]	3	3.500	[89]	300 Kcmil	0.63	500 Kcmil	0.813	150mm ² str	[16.0]	240mm ² str	[20.3]	4.12	[105]	4.06	[103]	1/2	[13]	2.38	[60]	5.19	[132]	282	480	54.1
GAR2039	3.000-3.50	3.000-3.50	[76]-[89]	3	3.500	[89]	550 Kcmil	0.85	750 Kcmil	0.998	300mm ² str	[22.6]	300mm ² str	[22.6]	4.19	[106]	4.44	[113]	5/8	[16]	2.75	[70]	5.56	[141]	450	660	74.4
GAR214C	3.500-4.00	3.500-4.00	[89]-[102]	3 1/2	4.000	[102]	8 sol	0.128	4 str	0.232	10mm ² sol	[3.6]	16mm ² str	[5.1]	4.44	[113]	3.81	[97]	3/8	[10]	1.31	[33]	5.31	[135]	264	240	27.0
GAR2126	3.500-4.00	3.500-4.00	[89]-[102]	3 1/2	4.000	[102]	4 sol	0.204	2/0 str	0.419	25mm ² str	[6.5]	70mm ² str	[10.9]	4.44	[113]	3.81	[97]	3/8	[10]	1.56	[40]	5.31	[135]	264	240	27.0
GAR2129	3.500-4.00	3.500-4.00	[89]-[102]	3 1/2	4.000	[102]	2/0 sol	0.365	250 Kcmil	0.575	70mm ² str	[10.9]	120mm ² str	[14.4]	4.44	[113]	3.81	[97]	3/8	[10]	1.81	[46]	5.31	[135]	264	240	27.0
GAR2134	3.500-4.00	3.500-4.00	[89]-[102]	3 1/2	4.000	[102]	300 Kcmil	0.63	500 Kcmil	0.813	150mm ² str	[16.0]	240mm ² str	[20.3]	4.56	[116]	4.19	[106]	1/2	[13]	2.38	[60]	5.69	[145]	436	480	54.1
GAR224C	4.000-4.50	4.000-4.50	[102]-[114]	4	4.500	[114]	8 sol	0.128	4 str	0.232	10mm ² sol	[3.6]	16mm ² str	[5.1]	4.94	[126]	3.75	[95]	3/8	[10]	1.31	[33]	5.81	[148]	261	240	27.0
GAR2226	4.000-4.50	4.000-4.50	[102]-[114]	4	4.500	[114]	4 sol	0.204	2/0 str	0.419	25mm ² str	[6.5]	70mm ² str	[10.9]	4.94	[126]	3.75	[95]	3/8	[10]	1.56	[40]	5.81	[148]	261	240	27.0
GAR2229	4.000-4.50	4.000-4.50	[102]-[114]	4	4.500	[114]	2/0 sol	0.365	250 Kcmil	0.575	70mm ² str	[10.9]	120mm ² str	[14.4]	4.94	[126]	3.75	[95]	3/8	[10]	1.81	[46]	5.81	[148]	261	240	27.0
GAR2234	4.000-4.50	4.000-4.50	[102]-[114]	4	4.500	[114]	300 Kcmil	0.63	500 Kcmil	0.813	150mm ² str	[16.0]	240mm ² str	[20.3]	5.06	[129]	4.06	[103]	1/2	[13]	2.38	[60]	6.19	[157]	416	480	54.1
GAR2426	--	--	--	5	5.563	[141]	4 sol	0.204	2/0 str	0.419	25mm ² str	[6.5]	70mm ² str	[10.9]	6.00	[152]	4.06	[103]	3/8	[10]	1.56	[40]	6.88	[175]	422	240	27.0
GAR2429	--	--	--	5	5.563	[141]	2/0 sol	0.365	250 Kcmil	0.575	70mm ² str	[10.9]	120mm ² str	[14.4]	6.00	[152]	4.44	[113]	3/8	[10]	1.81	[46]	6.88	[175]	422	240	27.0
GAR2434	--	--	--	5	5.563	[141]	300 Kcmil	0.63	500 Kcmil	0.813	150mm ² str	[16.0]	240mm ² str	[20.3]	6.12	[156]	4.69	[119]	1/2	[13]	2.38	[60]	7.25	[184]	437	480	54.1
GAR6439	0.625-0.75	0.625-0.75	[16]-[19]	3/8	0.675	[17]	550 Kcmil	0.85	750 Kcmil	0.998	300mm ² str	[22.6]	300mm ² str	[22.6]	1.62	[41]	2.69	[68]	1/2	[13]	2.55	[65]	2.75	[70]	247	480	54.1
GAR244C	-	-	-	5	5.563	[141]	8 sol	0.128	4 str	0.232	10mm ² str	[3.6]	16mm ² sol	[5.1]	1.62	[41]	4.06	[103]	3/8	[10]	1.56	[40]	6.88	[175]	122	240	27.0

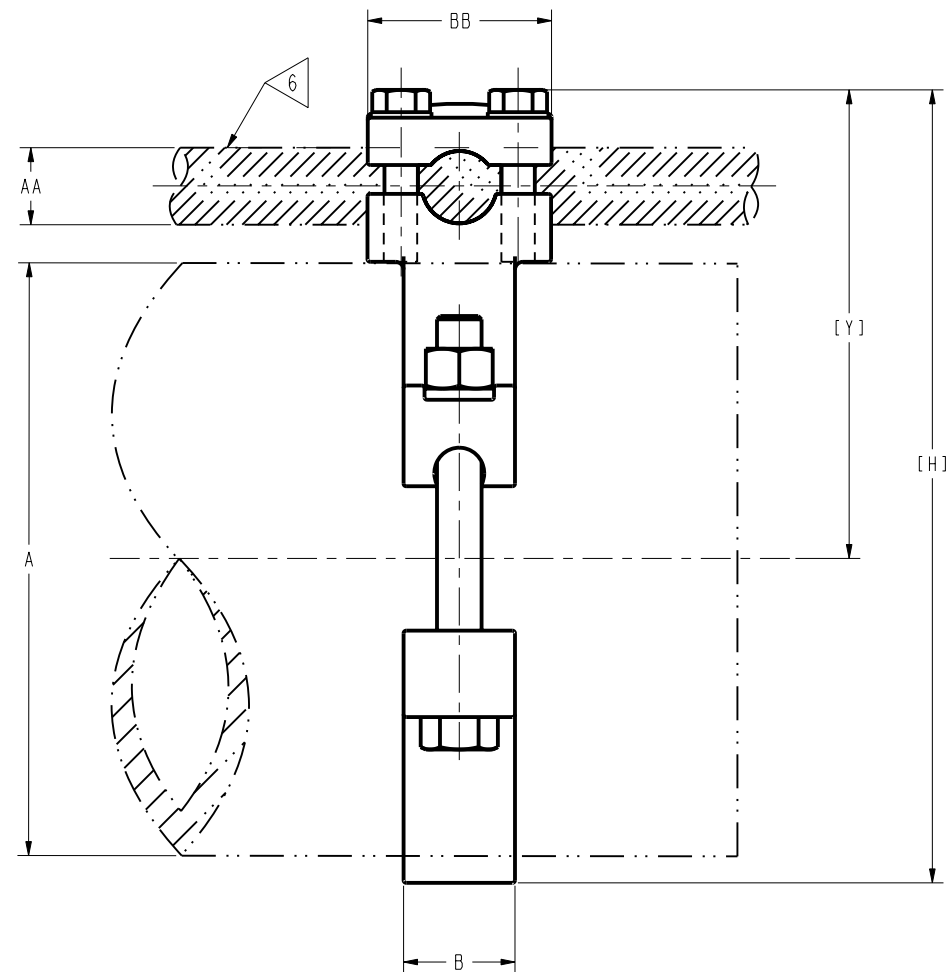
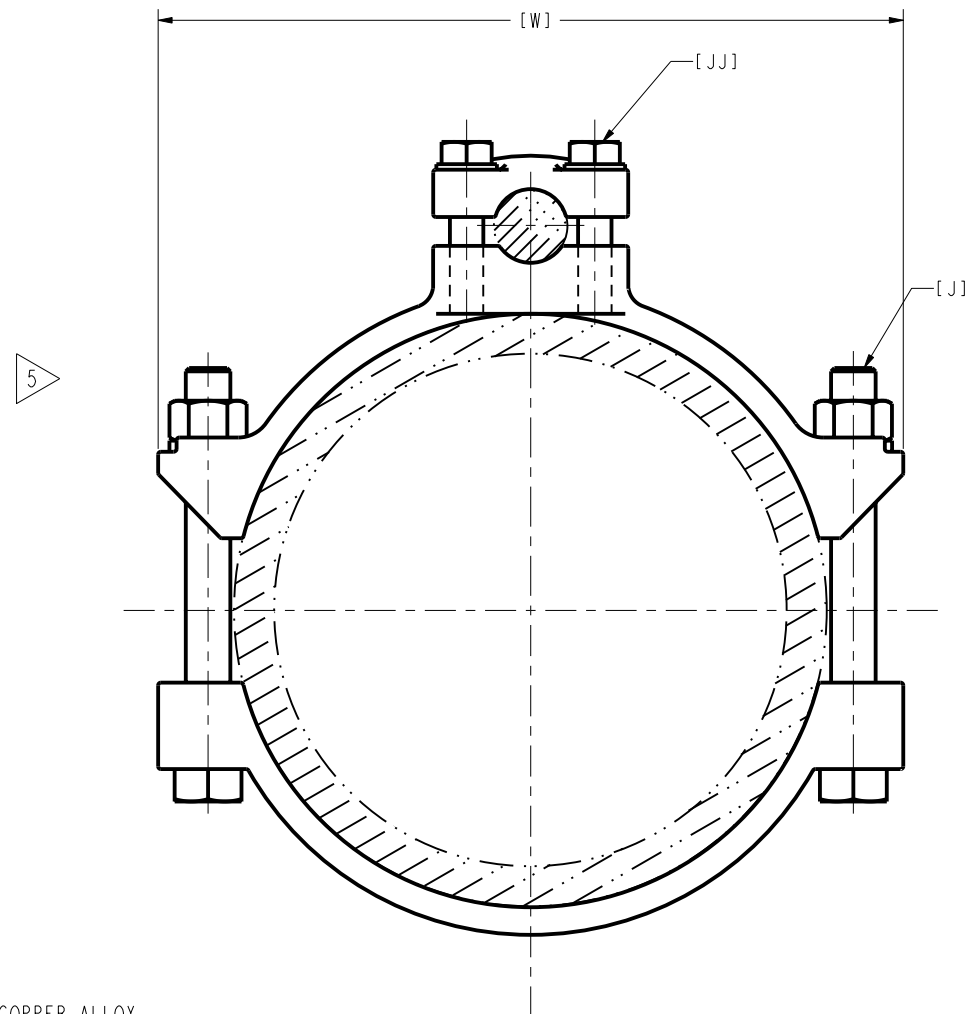


- NOTES:
1. MATERIAL: CAST COPPER ALLOY.
 2. FINISH: BRIGHT DIPPED.
 3. UL 467 LISTED FILE NO. E9999, ACCEPTABLE FOR DIRECT BURIAL IN EARTH AND CONCRETE CSA 22.2 NO 65 LISTED. FILE NO. 42862..
 4. DIMENSIONS IN BRACKETS [] ARE IN MILLIMETERS, ROUNDED OFF TO THE NEAREST MILLIMETER, UNLESS OTHERWISE NOTED, AND ARE FOR REFERENCE ONLY.
 5. ADD SUFFIX "TN" TO THESE CATALOG NUMBERS FOR TIN-PLATED VERSIONS. (HARDWARE NOT TIN PLATED).
 6. ADD SUFFIX "W" TO THESE CATALOG NUMBERS FOR TIN PLATED BODIES AND HARDWARE. HARDWARE TO BE ELECTRO-TIN PLATED.

TO ORDER BURNDY® PRODUCTS CALL		GROUND CLAMP - CABLE TO REBAR	
UNITED STATES 1-800-346-4175 (LONDONDERRY, NH)		ITEM NO: N/A	
CANADA: 1-800-361-6975 (QUEBEC) 1-800-387-6487 (ALL OTHER PROVINCES)		CAT. NO: GAR-- (TABLE)	
FOR PRODUCT INFO: http://www.burndy.com		DRAWN BY: B.K. 01/21/09	
		CHECKER: G.H.G. 01/21/09	
		DSN APPVL: T REYNOLDS 10/18/12	
		MFG APPVL: --	
		QA APPVL: J HILLMAN 10/22/12	
		MKT APPVL: P THERRIEN 10/19/12	
		PROJ #: --	
		SIZE: D	
		SCALE: 1:1	
		DRAWING NO: SD015789	
		SHEET 2 OF 4	
		REV: M	

REV: PEO200

CATALOG NUMBER	A				AA								B		BB		H		J		JJ		W		Y		TORQUE	
	I.P.S. PIPE ACCOMMODATED				COPPER CONDUCTOR ACCOMMODATED								(in)	(mm)	(in)	(mm)	(in)	(mm)	(in)	(mm)	(in)	(mm)	(in)	(mm)	Lb	in	Nm	
	NOMINAL DIAMETER (in)	ACTUAL DIAMETER			AWG				METRIC WIRE SIZE																			
		(in)	(mm)	SIZE	DIA	SIZE	DIA	SIZE	DIA	SIZE	DIA	MIN	MAX	MIN	MAX													
GAR8626	3	6	6.625	[162]	4 sol	0.204	2/0 str	0.419	25mm ² str	[6.5]	70mm ² str	[10.9]	1.25	[32]	1.69	[43]	2.50	[64]	1/2	[13]	3/8	[10]	8.38	[213]	4.88	[124]	480	54.1
GAR8629	3	6	6.625	[162]	2/0 sol	0.365	250 Kcmil	0.575	70mm ² str	[10.9]	120mm ² str	[14.4]	1.25	[32]	1.81	[46]	8.81	[224]	1/2	[13]	3/8	[10]	8.38	[213]	5.16	[131]	480	54.1
GAR8634	3	6	6.625	[162]	300 Kcmil	0.63	500 Kcmil	0.814	150mm ² str	[16.0]	240mm ² str	[20.3]	1.25	[32]	2.06	[52]	8.75	[222]	1/2	[13]	3/8	[10]	8.38	[213]	5.12	[130]	480	54.1



- NOTES:
- MATERIAL: CAST COPPER ALLOY.
 - FINISH: BRIGHT DIPPED.
 - NOT UL LISTED.
 - DIMENSIONS IN BRACKETS [] ARE IN MILLIMETERS ROUNDED OFF TO THE NEAREST MILLIMETER, UNLESS OTHERWISE NOTED, AND ARE FOR REFERENCE ONLY.
 - MAX. WITH MAX. CABLE IN PLACE BEFORE COMPRESSION.
 - CABLE IN OPTIONAL POSITION CAN BE ROTATED 90° FROM POSITION SHOWN.
 - ADD SUFFIX "TN" TO THESE CATALOG NUMBERS FOR TIN PLATED VERSIONS (HARDWARE NOT TIN PLATED).
 - ADD SUFFIX "W" TO THESE CATALOG NUMBERS FOR TIN PLATED BODIES AND HARDWARE. HARDWARE TO BE ELECTRO-TIN PLATED.

TO ORDER BURNDY® PRODUCTS CALL		GROUND CLAMP - CABLE TO REBAR	
UNITED STATES 1-800-346-4175 (LONDONDERRY, NH)		ITEM NO: N/A	
CANADA: 1-800-361-6975 (QUEBEC) 1-800-387-6487 (ALL OTHER PROVINCES)		CAT. NO: GAR-- (TABLE)	
FOR PRODUCT INFO: http://www.burndy.com		DRAWN BY: B.K. 01/21/09	
		CHECKER: G.H.G. 01/21/09	
		DSN APPVL: T. REYNOLDS 10/18/12	
		MFG APPVL: -- --	
		QA APPVL: J. HILLMAN 10/22/12	
		MKT APPVL: P. THERRIEN 10/19/12	
		SCALE: 1:1	
		PROJ #: --	
		SIZE: D	
		DRAWING NO: SD015789	
		REV: M	
		SHEET 3 OF 4	

REV: PE0200

