

Cal Missile™

Duct Cone Projectiles

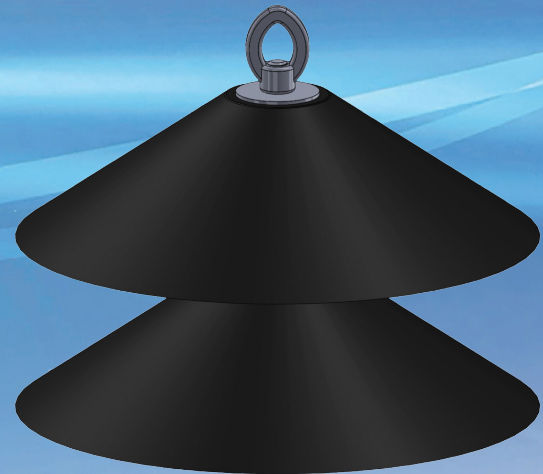


Cal Am Manufacturing's Cal Missile™ is the Cadillac of all missile line carriers; constructed with heavy duty stainless steel hardware and polyurethane blow cups, this ultra-tough projectile will perform flawlessly for you time and time again. Used to pneumatically install pull line into conduit runs, the Cal Missile™ is fast and efficient, easily blowing through even out-of-round duct with hand blower tools. The Cal Missile™ features dual fastening rings, one on each end of the projectile and is available with either 2 or 3 polyurethane cups, which offer the elasticity of rubber combined with the toughness and durability of metal.

Compared to other projectiles which use plastic or foam; the polyurethane cups of the Cal Missile™ offer you superior performance, have a higher load bearing capacity and better elastic memory. These cups, which are resistant to solvents, oxygen, ozone and sunlight, have an outstanding flex-life guaranteed to outlast other elastomers on the market today. The Cal Missile™ will remain flexible and still perform at any temperature found on any terrestrial job site. When you are looking for the best duct cone projectile available today, look to Cal Am Manufacturing.

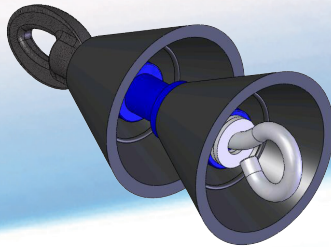
For over 25 years Cal Am has been providing the Power and Telecommunications industry with the highest quality conduit fittings and supports. For more information on other fine Cal Am products please call or visit our website at calammfg.com.

- **Ultra Tough and Re-usable**
- **Available in 22 sizes**
- **Fast Blowing, Low Friction**
- **For Use with Duct and Inner Duct**



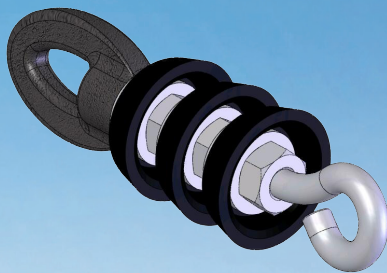


Duct Cone Projectiles



| PART # | SIZE | UNIT | CASE QTY |
|----------|-----------------|------|----------|
| 2110-010 | 1" | EA | 1 |
| 2110-011 | 1-1/4" (SDR11)* | EA | 1 |
| 2110-012 | 1-1/4" | EA | 1 |
| 2110-013 | 1-3/8" | EA | 1 |
| 2110-014 | 1-1/2" (SDR11)* | EA | 1 |
| 2110-015 | 1-1/2" | EA | 1 |
| 2110-017 | 1-7/8" | EA | 1 |
| 2110-019 | 2" (SDR11)* | EA | 1 |
| 2110-020 | 2" | EA | 1 |
| 2110-025 | 2-1/2" | EA | 1 |
| 2110-030 | 3" | EA | 1 |
| 2110-040 | 4" | EA | 1 |
| 2110-050 | 5" | EA | 1 |
| 2110-060 | 6" | EA | 1 |
| 2110-080 | 8" | EA | 1 |

Innerduct Cup Projectiles



| PART # | SIZE | UNIT | CASE QTY |
|----------|--------|------|----------|
| 2120-007 | 3/4" | EA | 1 |
| 2120-010 | 1" | EA | 1 |
| 2120-011 | 1-1/8" | EA | 1 |
| 2120-012 | 1-1/4" | EA | 1 |
| 2120-013 | 1-3/8" | EA | 1 |
| 2120-015 | 1-1/2" | EA | 1 |
| 2120-020 | 2" | EA | 1 |

